



HEATED BLACK GLASS SHELF

Models HBG-2418, -3018, -3618, -4818, -6018, -7218
HBGB-2418, -3018, -3618, -4818, -6018, -7218

The Hatco Heated Black Glass Shelf has a heated ceramic glass surface to create uniform heat across the entire surface, and is made of approved food-safe material. Adjustable thermostat controls allow surface temperature to range from 100° to 200°F (38°-93°C).

FLEXIBILITY

Ideal for use on pass-through areas, buffet lines and as hors d'oeuvre displays. These unique foodwarmers are available in portable and built-in models. Surface color is black and they feature a thermostatically-controlled heated ceramic glass surface to help hold your food hot and delicious. Shelves are made of approved foodsafe materials, allowing you to place food product directly on the glass surface.

Built-in models have an optional flush mount control box with a 3' (914 mm) conduit. All units come with a 6' (1829 mm) cord and plug.

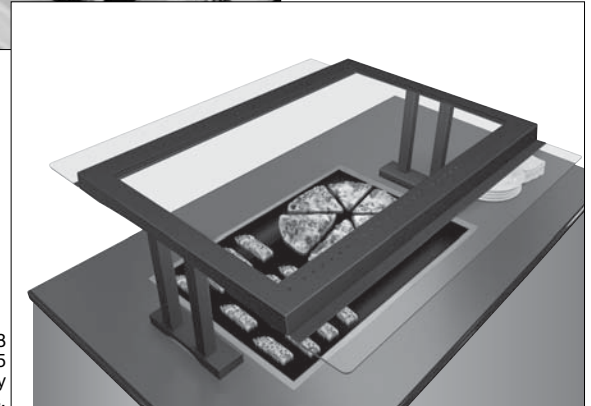
QUALITY

The following features assure the finest performance for years to come:

- Available in portable and built-in models.
- Hatco Heated Black Glass Shelves are made of approved food-safe materials allowing direct food placement of shelf surface.
- Every Heated Black Glass Shelf features a thermostatically-controlled heated base to help hold food hot and delicious.
- Lighted on/off rocker switch.
- The built-in unit is equipped with an attached trim mounting ring that is available in stainless steel (standard) or *Designer Black* powdercoated.
- Portable units are available with accessory stainless steel (standard) or *Designer Black* powdercoated and plastic handles.
- Portable units are equipped with a trim ring that is available in stainless steel (standard) or *Designer Black* powdercoated.



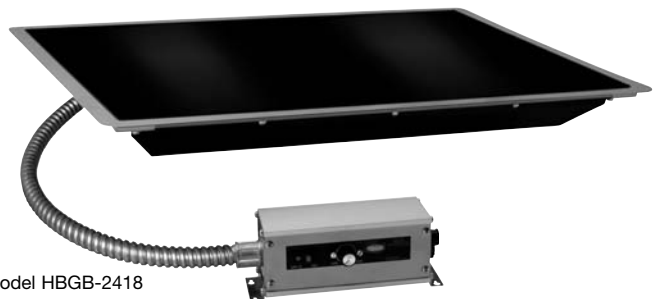
HBG-2418



HBGB-2418
under GR3L-35
with accessory
sneeze guards.



Model HBG-2418 with accessory
stainless steel and plastic handles



Model HBGB-2418

HBGB Countertop Cut-Out Dimensions

| Model | Minimum Width | Maximum Width | Minimum Depth | Maximum Depth |
|-----------|------------------|---------------|-----------------|---------------|
| HBGB-2418 | 24.75" (629 mm) | 25" (635 mm) | 18.75" (476 mm) | 19" (483 mm) |
| HBGB-3018 | 30.75" (781 mm) | 31" (787 mm) | 18.75" (476 mm) | 19" (483 mm) |
| HBGB-3618 | 36.75" (933 mm) | 37" (940 mm) | 18.75" (476 mm) | 19" (483 mm) |
| HBGB-4818 | 48.75" (1238 mm) | 49" (1245 mm) | 18.75" (476 mm) | 19" (483 mm) |
| HBGB-6018 | 60.75" (1543 mm) | 61" (1549 mm) | 18.75" (476 mm) | 19" (483 mm) |
| HBGB-7218 | 72.75" (1848 mm) | 73" (1854 mm) | 18.75" (476 mm) | 19" (483 mm) |



HATCO CORPORATION P.O. Box 340500 Milwaukee, WI 53234-0500 U.S.A.
(800) 558-0607 • (414) 671-6350 • Fax (800) 543-7521 • Int'l. Fax (414) 671-3976
www.hatcocorp.com • E-mail: equipsales@hatcocorp.com

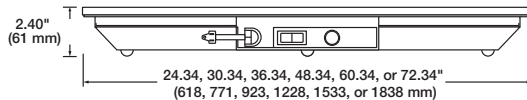
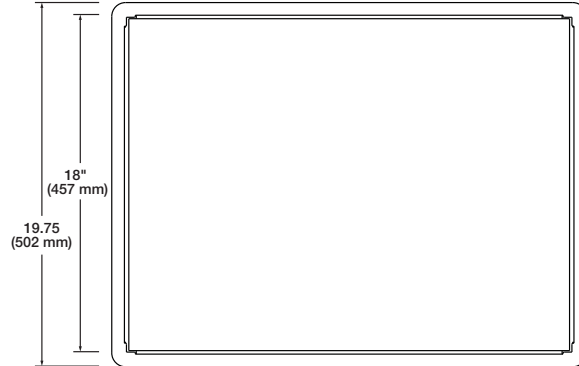
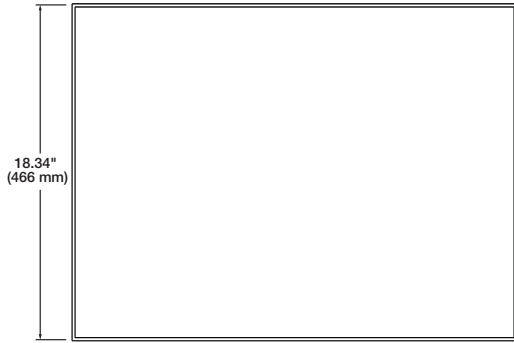
Form No. HBG Spec Sheet

Printed in U.S.A.
December 2008

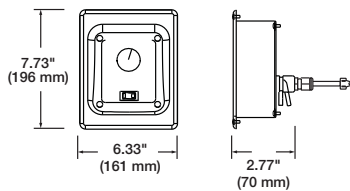


HEATED BLACK GLASS SHELF

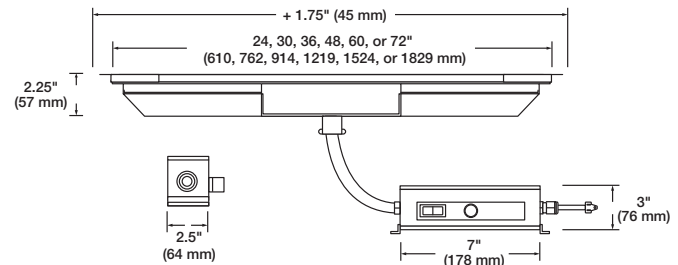
Models HBG-2418, -3018, -3618, -4818, -6018, -7218
HBGB-2418, -3018, -3618, -4818, -6018, -7218



HBG Models



HBGB Flush Mount Control Box



HBGB Models

SPECIFICATIONS

Portable Models

| Model | Watts | Amps | Width | Shipping Weight |
|-----------------------|-------|------|------------------|-----------------|
| HBG-2418 | 425 | 3.5 | 24.34" (618 mm) | 22 lbs. (10 kg) |
| HBG-3018 | 525 | 4.4 | 30.34" (771 mm) | 27 lbs. (12 kg) |
| HBG-3618 | 630 | 5.3 | 36.34" (923 mm) | 32 lbs. (15 kg) |
| HBG-4818 ^o | 850 | 7.1 | 48.34" (1228 mm) | 44 lbs. (20 kg) |
| HBG-6018 ^o | 1050 | 8.8 | 60.34" (1533 mm) | 54 lbs. (25 kg) |
| HBG-7218 ^o | 1260 | 10.5 | 72.34" (1838 mm) | 64 lbs. (29 kg) |

Built-in Models

| Model | Watts | Amps | Width | Shipping Weight |
|------------------------|-------|------|---------------|-----------------|
| HBGB-2418 | 425 | 3.5 | 24" (610 mm) | 27 lbs. (12 kg) |
| HBGB-3018 | 525 | 4.4 | 30" (762 mm) | 32 lbs. (15 kg) |
| HBGB-3618 | 630 | 5.3 | 36" (914 mm) | 37 lbs. (17 kg) |
| HBGB-4818 ^o | 850 | 7.1 | 48" (1220 mm) | 54 lbs. (25 kg) |
| HBGB-6018 ^o | 1050 | 8.8 | 60" (1524 mm) | 64 lbs. (29 kg) |
| HBGB-7218 ^o | 1260 | 10.5 | 72" (1828 mm) | 74 lbs. (34 kg) |

^o Units over 36" (914 mm) are constructed of two equal size pieces of glass.

DIMENSIONS

HBG-2418, -3018, -3618, -4818, -6018, -7218: 24.34", 30.34", 36.34", 48.34", 60.34", or 72.34"W x 18.35"D x 2.40"H (618, 771, 923, 1228, 1533, or 1838 x 466 x 61 mm).

HBGB-2418, -3018, -3618, -4818, -6018, -7218: 24", 30", 36", 48", 60", or 72"W x 18"D x 2.10"H (610, 762, 914, 1219, 1524, or 1829 x 457 x 53 mm).

Control Box Dimensions:

HBGB flush mount: 6.33"W x 2.77"D x 7.73"H (161 x 70 x 196 mm).

HBGB standard control box: 7"W x 2.5"D x 3"H (178 x 64 x 76 mm).

VOLTAGE

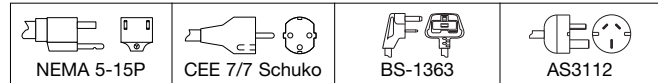
120V, single phase, NEMA 5-15P.

Export voltages available.

CORD LOCATION

Front left of control.

PLUG CONFIGURATION



OPTIONS (NOT FOR RETROFIT)

- Flush Mount Control Box with Lighted On/Off Rocker Switch in Stainless Steel (Standard) or Designer Black Powdercoated (HBGB models only)
- Trim Ring, Available in Stainless Steel (Standard) or Designer Black Powdercoated (HBGB models only)
- Built-in Heated Black Glass with Recessed Top (HBGB models only)

- Food Stop (HBG models only)

ACCESSORIES

- Rounded Stainless Steel (Standard) or Designer Black Powdercoated and Plastic Handles

PRODUCT SPECS

Heated Black Glass Shelf

The Heated Black Glass Shelf shall be a Hatco- Model as manufactured by the Hatco Corporation, Milwaukee, WI 53234 U.S.A.

With 24/7 parts and service assistance (U.S. and Canada only), the Heated Black Glass Shelf shall be rated at watts, volts,

and inches (millimeters) in overall width. It shall consist of food-safe material, thermostatically-controlled heated base, and a 6' (1829 mm) cord with plug attached (HBG models only) or remote box with 3' (914 mm) conduit (HBGB models only), and a 6' (1829 mm) cord with plug attached.

HATCO CORPORATION P.O. Box 340500 Milwaukee, WI 53234-0500 U.S.A. • (800) 558-0607 • (414) 671-6350
Fax (800) 543-7521 • Int'l. Fax (414) 671-3976 • www.hatcocorp.com • E-mail: equipsales@hatcocorp.com