



Profit from the Eagle Advantage®

Specification Sheet

Short Form Specifications

Eagle 1800 Series Cocktail Unit, model _____. Top, front, backsplash and ice bin to be heavy gauge type 304 stainless steel. Ice bin to be deep-drawn seamless design, fully insulated, with 1½" drain and plastic bottle holders. 1½" O.D. galvanized tubular legs with welded crossbracing and adjustable bullet feet.

Eagle 1800 Series Cocktail Unit with Sealed-In Cold Plate, model _____. Top, front, backsplash and ice bin to be heavy gauge type 304 stainless steel. Ice bin to be deep-drawn seamless design, fully insulated, with sealed-in 7-circuit cold plate and 1½" drain. 1½" O.D. galvanized tubular legs with welded crossbracing and adjustable bullet feet.



B2CT-18 cocktail unit

Options / Accessories

- Speed rail
- Stainless steel leg kits (see below)

Optional Stainless Steel Leg Kits for Cocktail Units	
add suffix #	description
-SL	stainless steel leg assemblies
-SLF	stainless steel leg assemblies & stainless steel feet
-SLG	stainless steel leg assemblies & stainless steel gussets
-SLGF	stainless steel leg assemblies, stainless steel feet & gussets

EAGLE GROUP
 100 Industrial Boulevard, Clayton, DE 19938-8903 USA
 Phone: 302-653-3000 • Fax: 302-653-2065
 www.eaglegrp.com

Foodservice Division: Phone 800-441-8440
MHC/Retail Display Divisions: Phone 800-637-5100

For custom configuration or fabrication needs, contact our **SpecFAB® Division**.
 Phone: 302-653-3000 • Fax: 302-653-3091 • e-mail: specfab@eaglegrp.com

Item No.: _____
 Project No.: _____
 S.I.S. No.: _____

1800 Series Cocktail Units

MODELS:

- | | | |
|------------------------------------|--|--|
| <input type="checkbox"/> B2CT-18 | <input type="checkbox"/> B2CT-12D-18 | <input type="checkbox"/> B2CT-16D-18 |
| <input type="checkbox"/> B3CT-18 | <input type="checkbox"/> B3CT-12D-18 | <input type="checkbox"/> B3CT-16D-18 |
| <input type="checkbox"/> B2CT-18-7 | <input type="checkbox"/> B2CT-12D-18-7 | <input type="checkbox"/> B2CT-16D-18-7 |
| <input type="checkbox"/> B3CT-18-7 | <input type="checkbox"/> B3CT-12D-18-7 | <input type="checkbox"/> B3CT-16D-18-7 |

Design and Construction Features

- New bullnose front edge.
- Units are modular, allowing for custom configurations of underbar equipment using standard components.
- 22 gauge type 304 stainless steel body (front and ends).
- Fabricated ice bins are available in 60-lb. ice capacity (24" models) and 75-lb. capacity (36" models).
- Ice bins are 8", 12", or 16" deep (203, 305, or 406mm) .
- Bottom and back panels are galvanized steel construction.
- Brushed stainless steel finish.
- Six- or eight-bottle capacity.
- 1½" (38mm) drain.
- Post-Mix Cold plates: aluminum casting with seven stainless steel beverage grade tubing circuits. Cold plates are mounted flush with interior bottom of bowl for easy cleaning and maximum efficiency. Drain is ½" (13mm) NPT. ¼" (6mm) O.D. tubing beverage connection provided.
- Adjustable plastic feet.

Certifications / Approvals



Spec sheets available for viewing, printing or downloading from our online literature library at www.eaglegrp.com



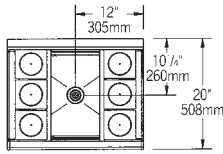
Profit from the Eagle Advantage®

Item No.: _____
 Project No.: _____
 S.I.S. No.: _____

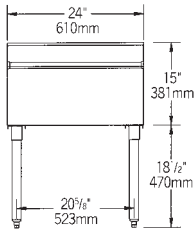
1800 Series Cocktail Units

Models without Post-Mix Cold Plate

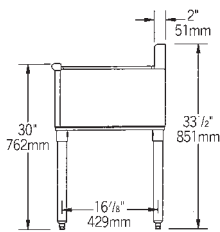
#B2CT-18



TOP VIEW

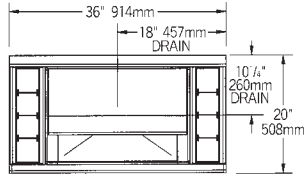


FRONT VIEW

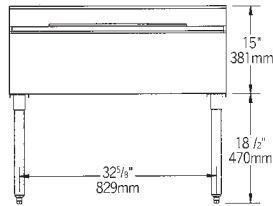


SIDE VIEW

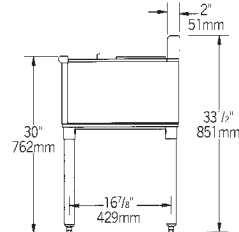
#B3CT-18



TOP VIEW



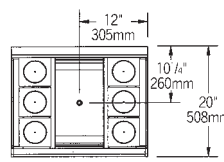
FRONT VIEW



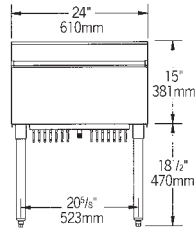
SIDE VIEW

Models with Post-Mix Cold Plate

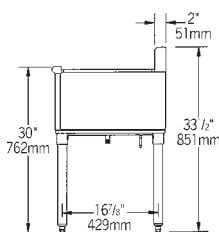
#B2CT-18-7



TOP VIEW

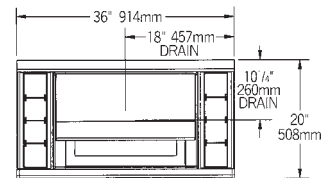


FRONT VIEW

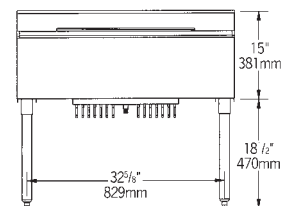


SIDE VIEW

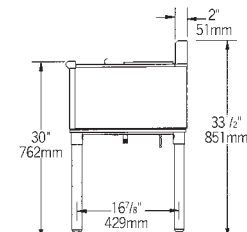
#B3CT-18-7



TOP VIEW



FRONT VIEW



SIDE VIEW

model #	width x length		weight		ice bin depth	
	in.	mm	lbs.	kg	in.	mm
B2CT-18					8"	203
B2CT-12D-18	20" x 24"	495 x 610	58	26.3	12"	305
B2CT-16D-18					16"	406
B3CT-18 *					8"	203
B3CT-12D-18 *	20" x 36"	495 x 914	70	31.8	12"	305
B3CT-16D-18 *					16"	406

model #	width x length		weight		ice bin depth	
	in.	mm	lbs.	kg	in.	mm
B2CT-18-7					8"	203
B2CT-12D-18-7	20" x 24"	495 x 610	88	39.9	12"	305
B2CT-16D-18-7					16"	406
B3CT-18-7 *					8"	203
B3CT-12D-18-7 *	20" x 36"	495 x 914	100	45.4	12"	305
B3CT-16D-18-7 *					16"	406

* "B3" units include stainless steel sliding cover

EAGLE GROUP
 100 Industrial Boulevard, Clayton, DE 19938-8903 USA
 Phone: 302-653-3000 • Fax: 302-653-2065
 www.eaglegrp.com

Foodservice Division: Phone 800-441-8440
 MHC/Retail Display Divisions: Phone 800-637-5100

Printed in U.S.A.
 ©2009 by Eagle Group
 Rev. 10/09

Spec sheets available for viewing, printing or downloading from our online literature library at www.eaglegrp.com

Although every attempt has been made to ensure the accuracy of the information provided, we cannot be held responsible for typographical or printing errors. Information and specifications are subject to change without notice. Please confirm at time of order.